



Smart Growth America
Improving lives by improving communities



National Complete Streets Coalition

Creating safer streets with demonstration projects



The webinar will begin at 2:00PM ET

Safe Streets, Smart Cities Academy

- Technical assistance program funded by Safe System Innovation Grant from Road to Zero
- Competitive application process to choose three jurisdictions
 - City of Durham, NC
 - City of Huntsville, AL
 - City of Pittsburgh, PA



Safe Streets, Smart Cities Academy

- Series of three workshops and six distance learning modules
 - Proven safety countermeasures
 - Creative placemaking
 - Community engagement
- Peer-learning model with interactive exercises
- **Practical component:** plan and implement a safety demonstration project

Today's webinar



Smart Growth America
Improving lives by improving communities



National Complete
Streets Coalition

Safety Demonstration Projects

Case studies from Durham, NC, Huntsville, AL, and Pittsburgh, PA



Anne Phillips
Leslie Tracey
Durham, NC

Paige Colburn
Clint Johns
Huntsville, AL

Kristin Saunders
Katy Sawyer
Pittsburgh, PA

Q&A
Type your questions in
the chat box



Durham, NC demonstration project

West Club Boulevard



Safe Streets, Smart Cities Academy

Project Story | May 2019



Bicyclist and
pedestrian crashes
that between 2007
and 2015



High Bus Stop Use

- Rated in the Top 20 used with 150 weekday boardings
- GoDurham Rider Demographics:
 - 68% African American
 - 63% have no car
 - 75% make less than \$25,000



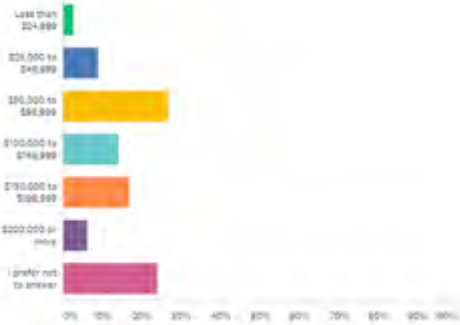
Engagement Activities

- Online Survey (4 weeks): 126
- Six intercept surveys, 46 conversations & 84 crossing observation
- Trinity Park Neighborhood Association Meeting: 32
- Northgate Children's Festival : 76
- NIS sent emails to contacts in Walltown
 - Survey link
 - Asking if there were events that we should attend (no response)
- Second Online Survey: 241
- Second Round of Intercept Interviews: 46
- Artwork engagement (online and in-person): 348

Online vs. Intercept Responses

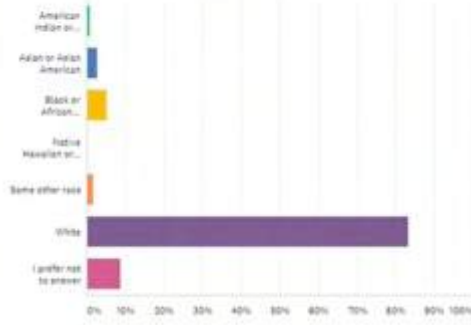
What is your annual household income?

Answered: 112 Skipped: 14



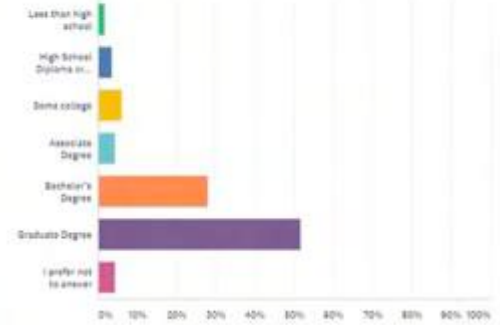
What is your race? Select any that may apply.

Answered: 104 Skipped: 12



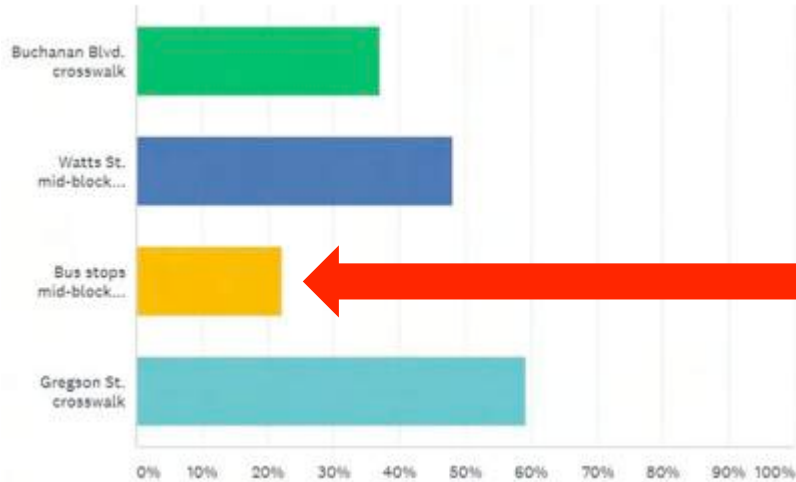
What is the highest level of education you have completed?

Answered: 104 Skipped: 12



	ALWAYS	OFTEN	SOMETIMES	RARELY	NEVER	TOTAL RESPONDENTS
Walk	1.98% 2	23.76% 24	29.70% 30	25.74% 26	18.81% 19	101
Bike	3.33% 3	11.11% 10	14.44% 13	18.89% 17	52.22% 47	90
Bus	5.88% 5	2.35% 2	4.71% 4	9.41% 8	77.65% 66	85
Drive	44.07% 52	44.07% 52	9.32% 11	1.69% 2	0.85% 1	118

Survey vs. Crossing Observations



The least common crossing pattern reported in the survey is contradictory to the most commonly observed crossing patterns.

Online Survey Results

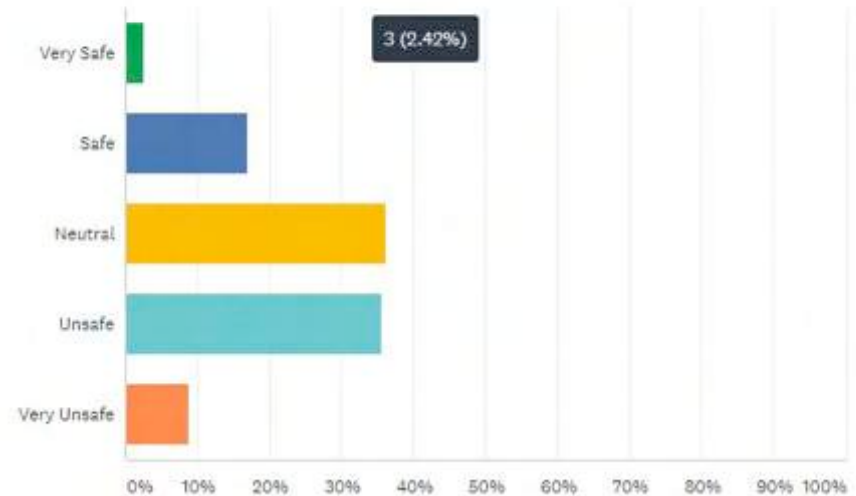
Most people recognized vulnerable user safety issues on this roadway section.

Design suggestion count:

- Crossing: 37
- Crossing with signal: 13
- Bike lane: 23
- Signal: 19
- Road diet: 16
- Speed management: 13
- Visibility/lighting: 4

How safe do you feel on West Club Blvd. between Gregson St. and Buchanan Blvd.?

Answered: 124 Skipped: 2



Intercept Interviews

- Most people did not want to take the survey, but were willing to chat with us
- We developed a shorter comment form after realizing that most people did not want to take the survey
- Went out four times, spoke to 46 people, observed 84 crossings
- Questions asked:
 - How often do you come here?
 - What two things can we do to make this area safer for all roadway users?
 - Where do you normally cross?
 - Do cars yield for you when crossing?

Intercept Takeaways

- The most common suggestion was to add a way for people to cross safely mid-block
- Many people expressed concern that a crosswalk might not be sufficient enough to encourage drivers to yield to pedestrians, and several suggested that a signal (referred to as a traffic light or some kind of light that pedestrians could push to cross)
- The second most common concern was speeding

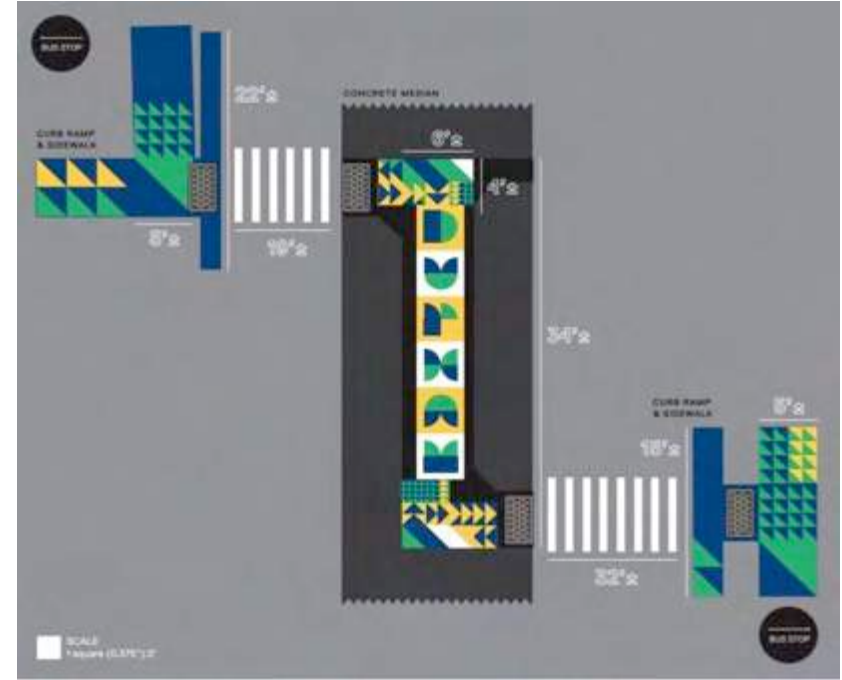


D crossing: most frequent (26)

C crossing: second most observed (13)

A crossing: third most observed (8)

Art Concept by Madiha Malik



Project Improvements



Temporary Road Diet
(3 weeks)



Mid-block Crossing



Rectangular Rapid Flashing
Beacon

Project Results and Lessons Learned



73%

Of people surveyed near the project site said the project increased their feeling of safety



4mph

Reduction in the 85th percentile speed (EB)



0 - 24%

Increase in drivers yielding to pedestrians in the crosswalk



4 second

Reduction in pedestrian delay to cross the street**

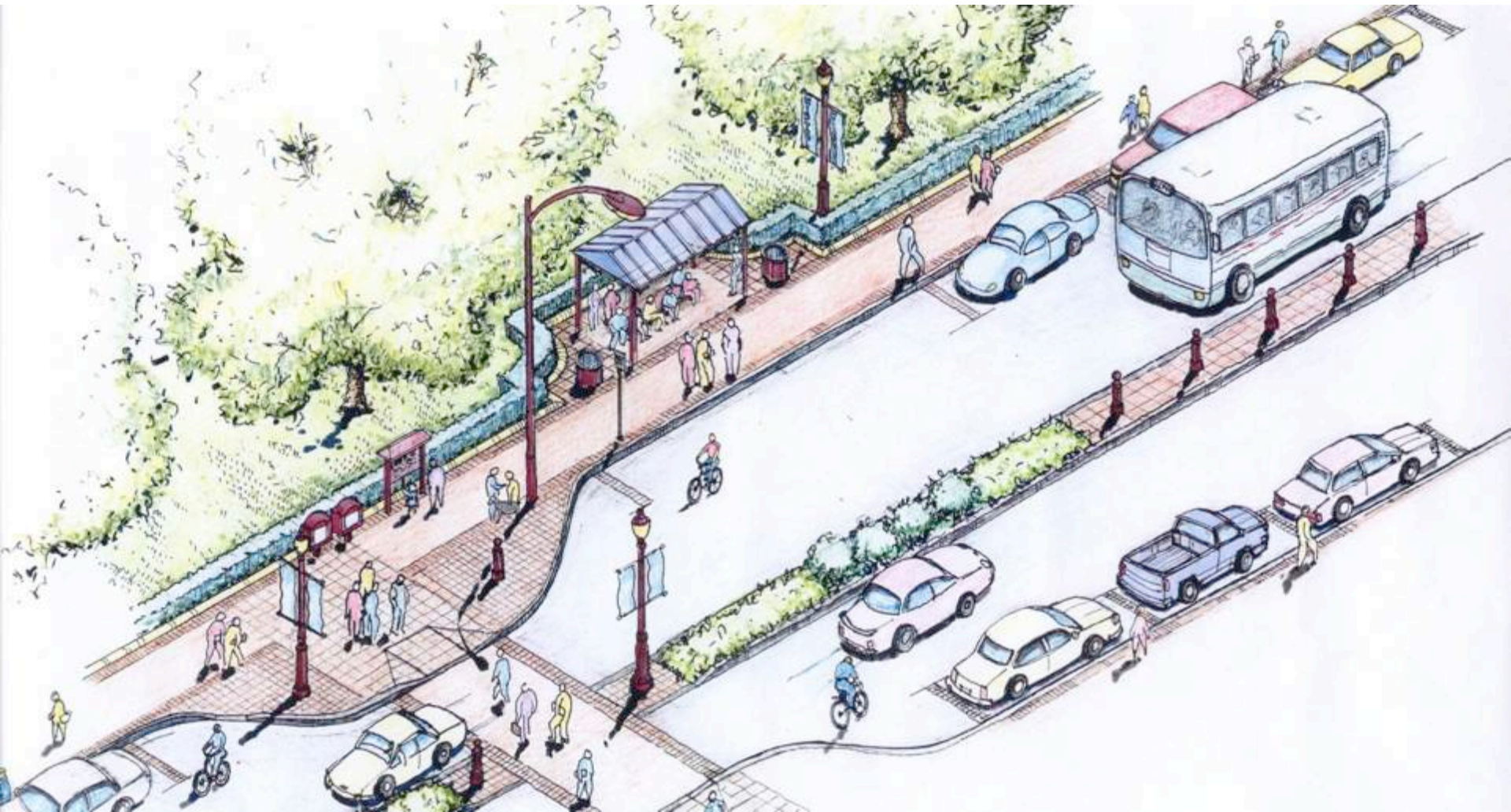


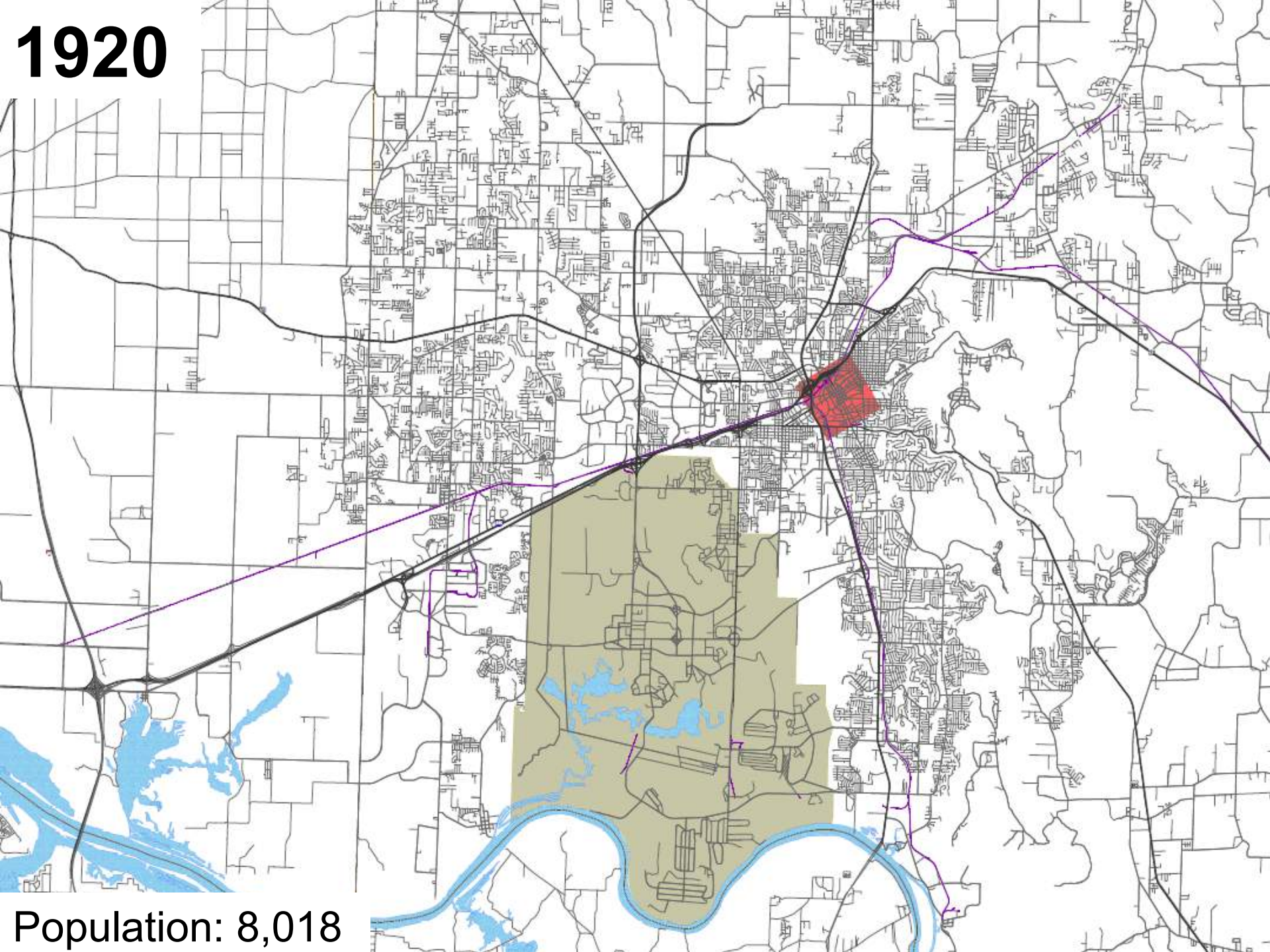
Huntsville, AL demonstration project

4 Mile Post

Complete Streets in Huntsville, AL

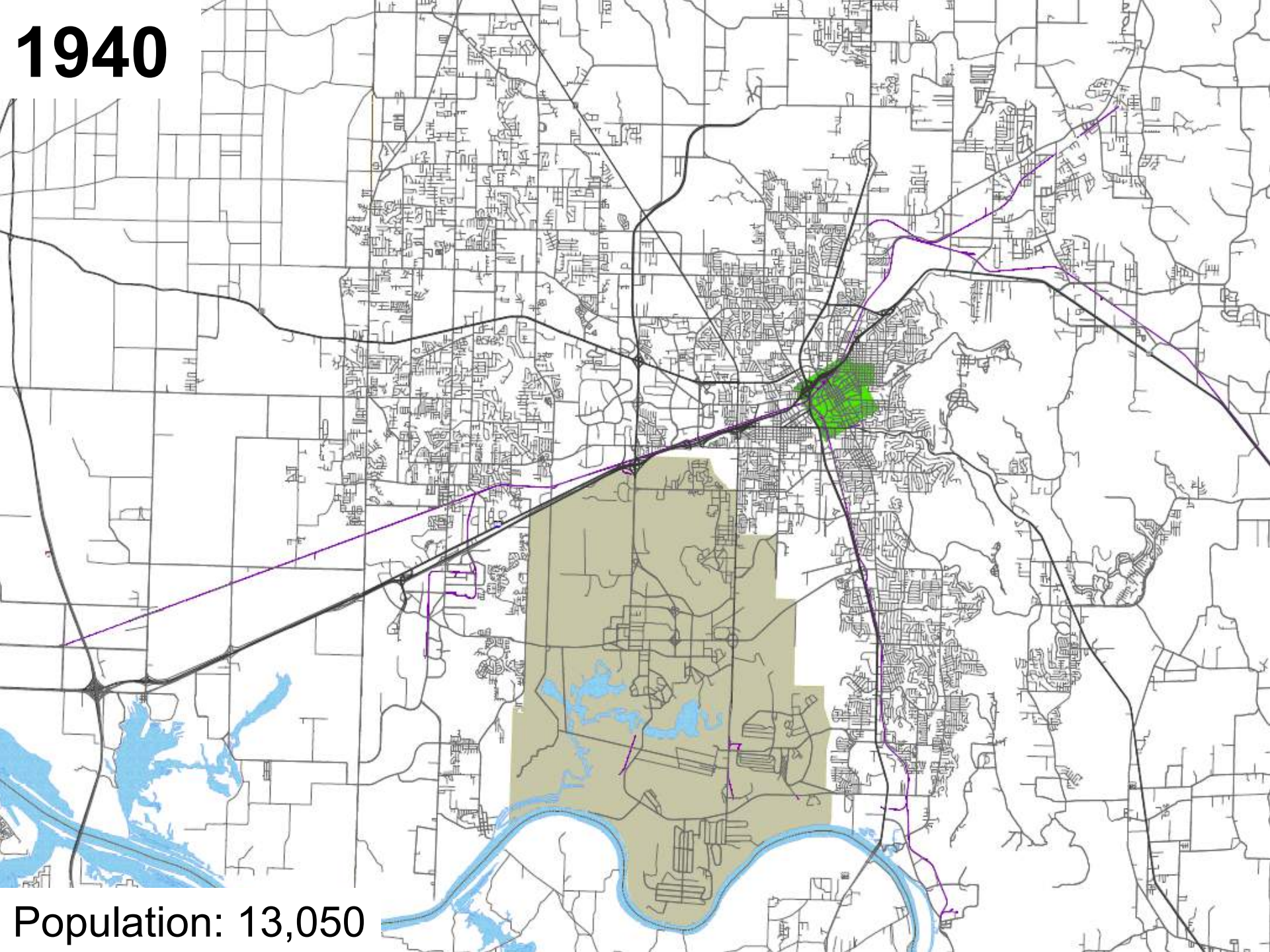
Challenges and A Demonstration Project





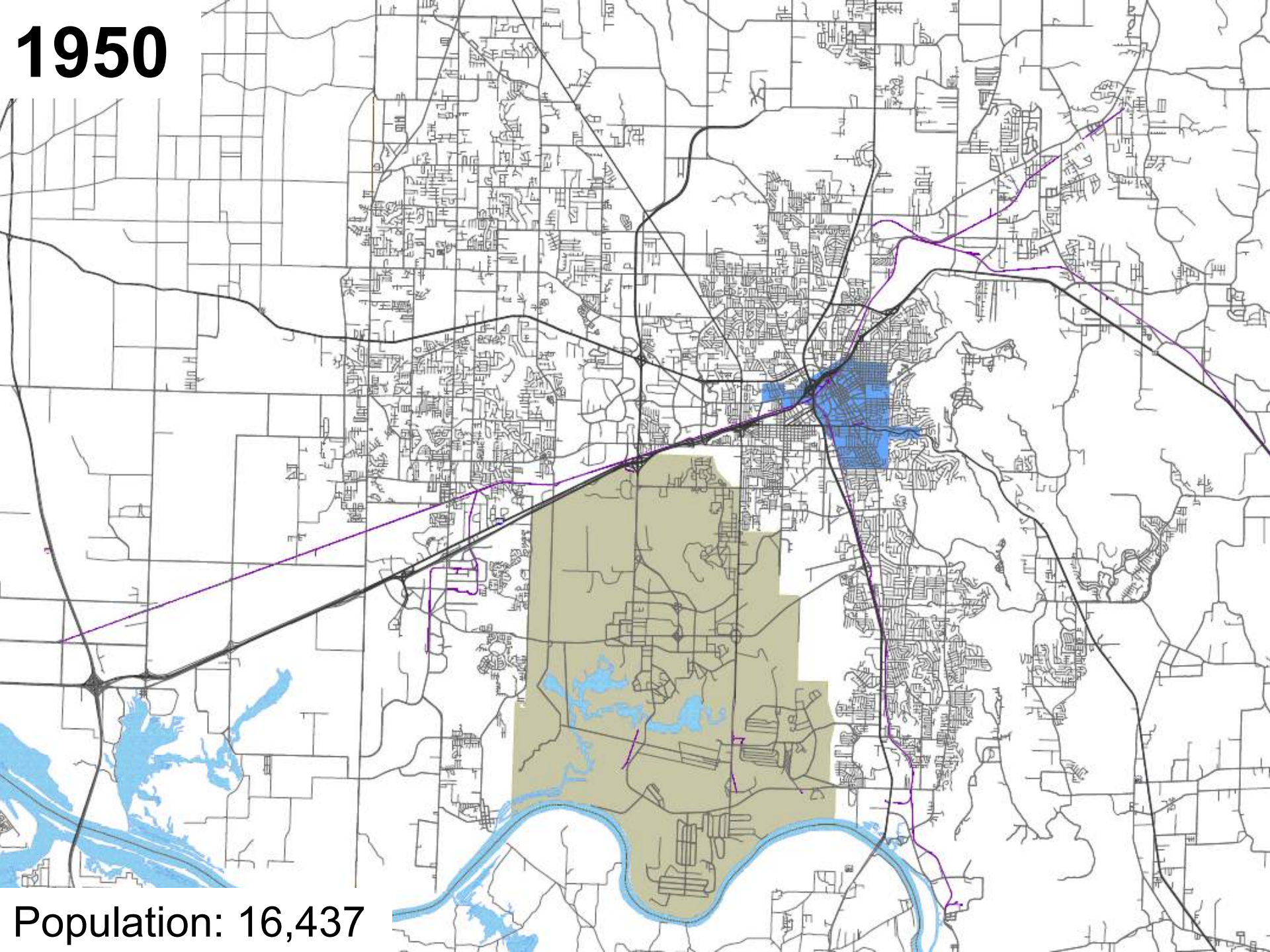
1920

Population: 8,018



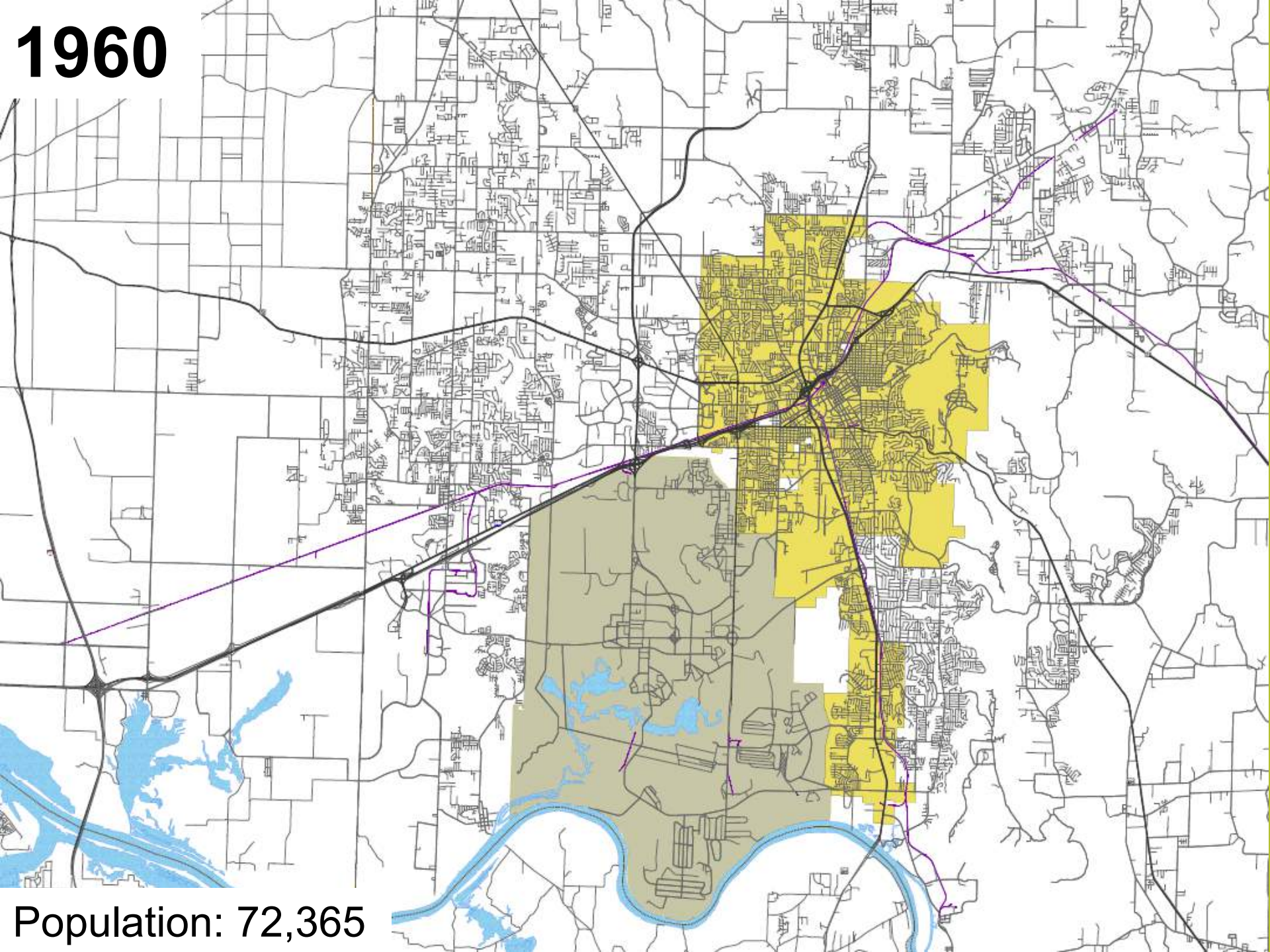
1940

Population: 13,050



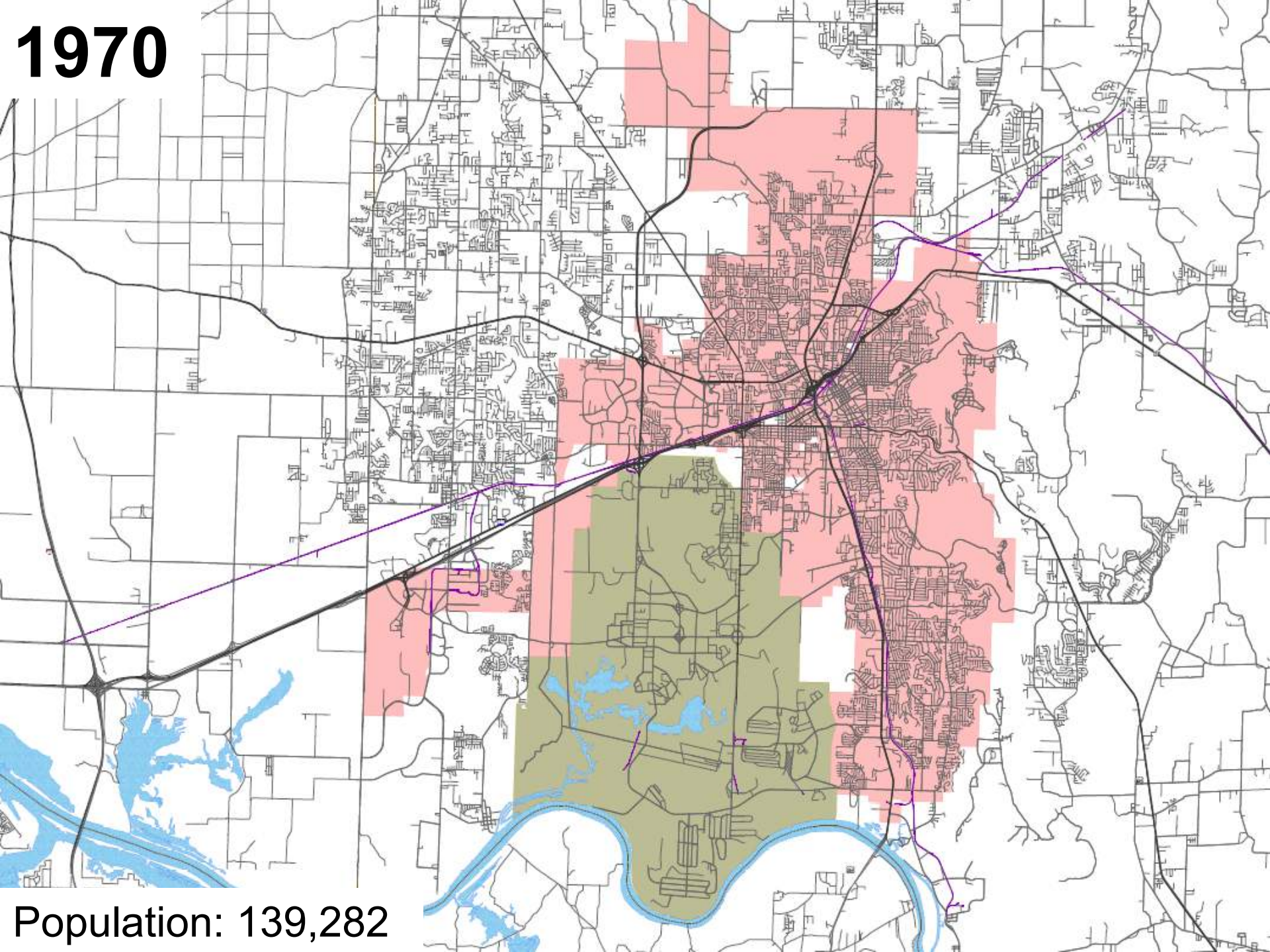
1950

Population: 16,437



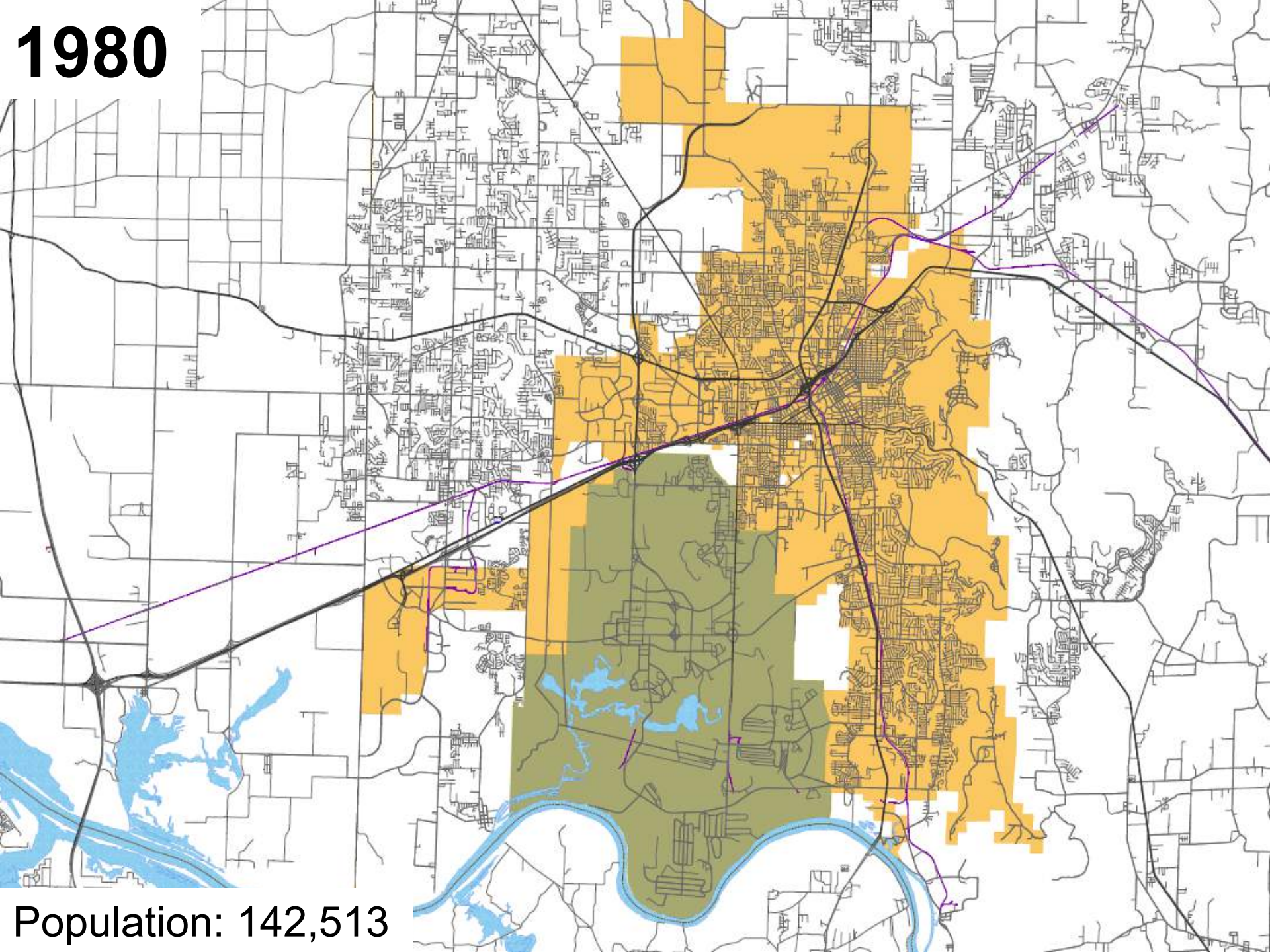
1960

Population: 72,365



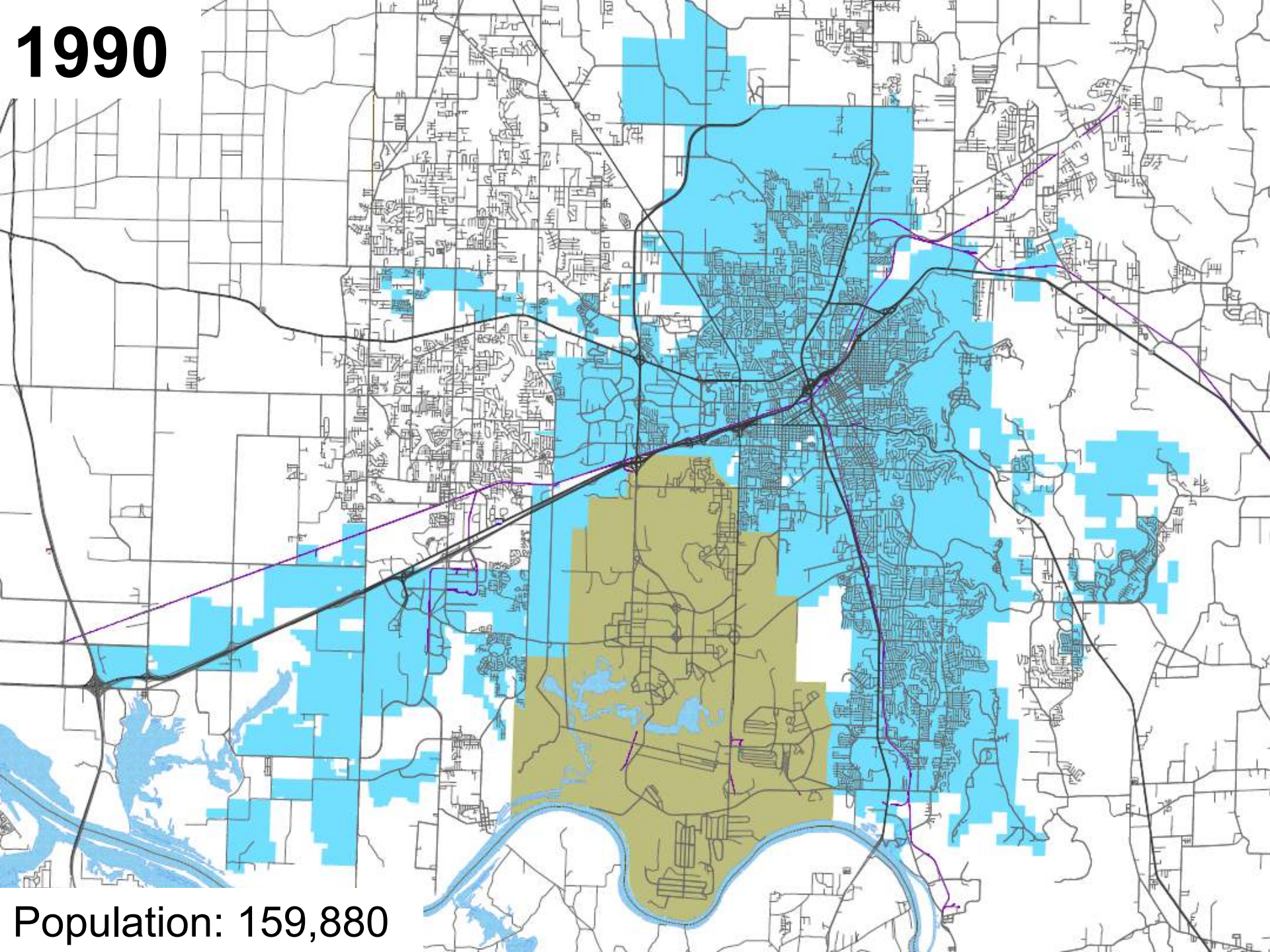
1970

Population: 139,282



1980

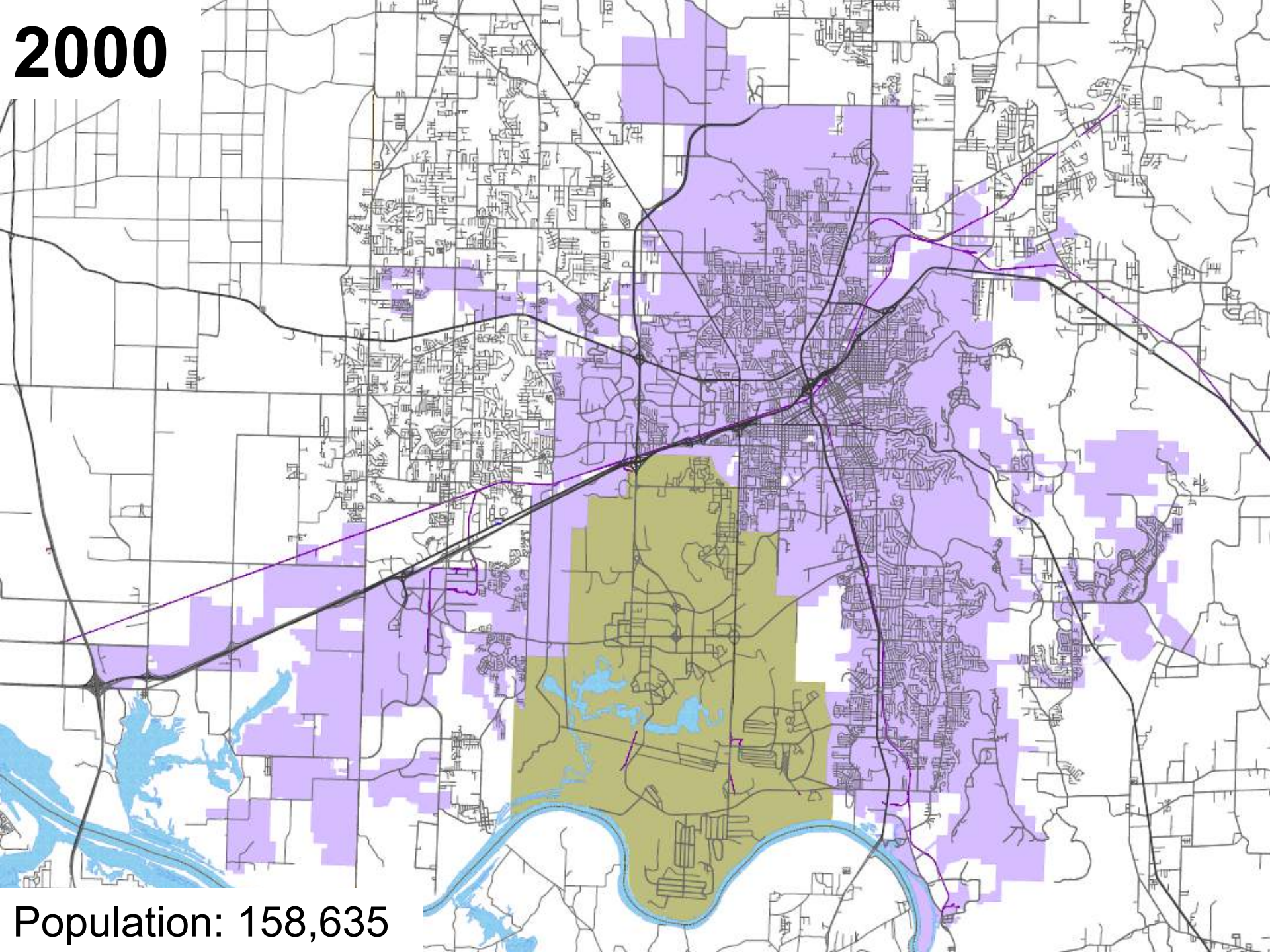
Population: 142,513



1990

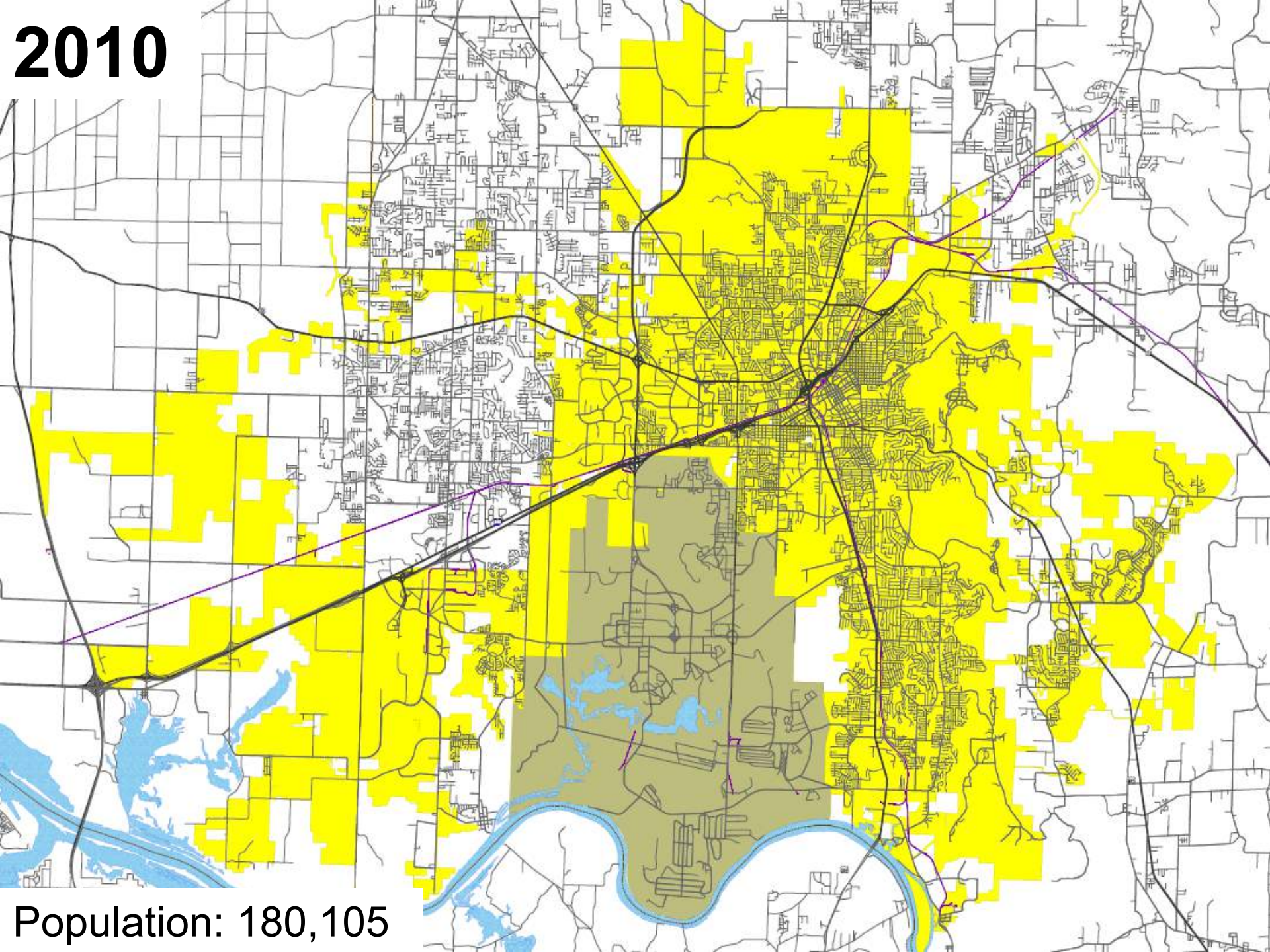
Population: 159,880

2000

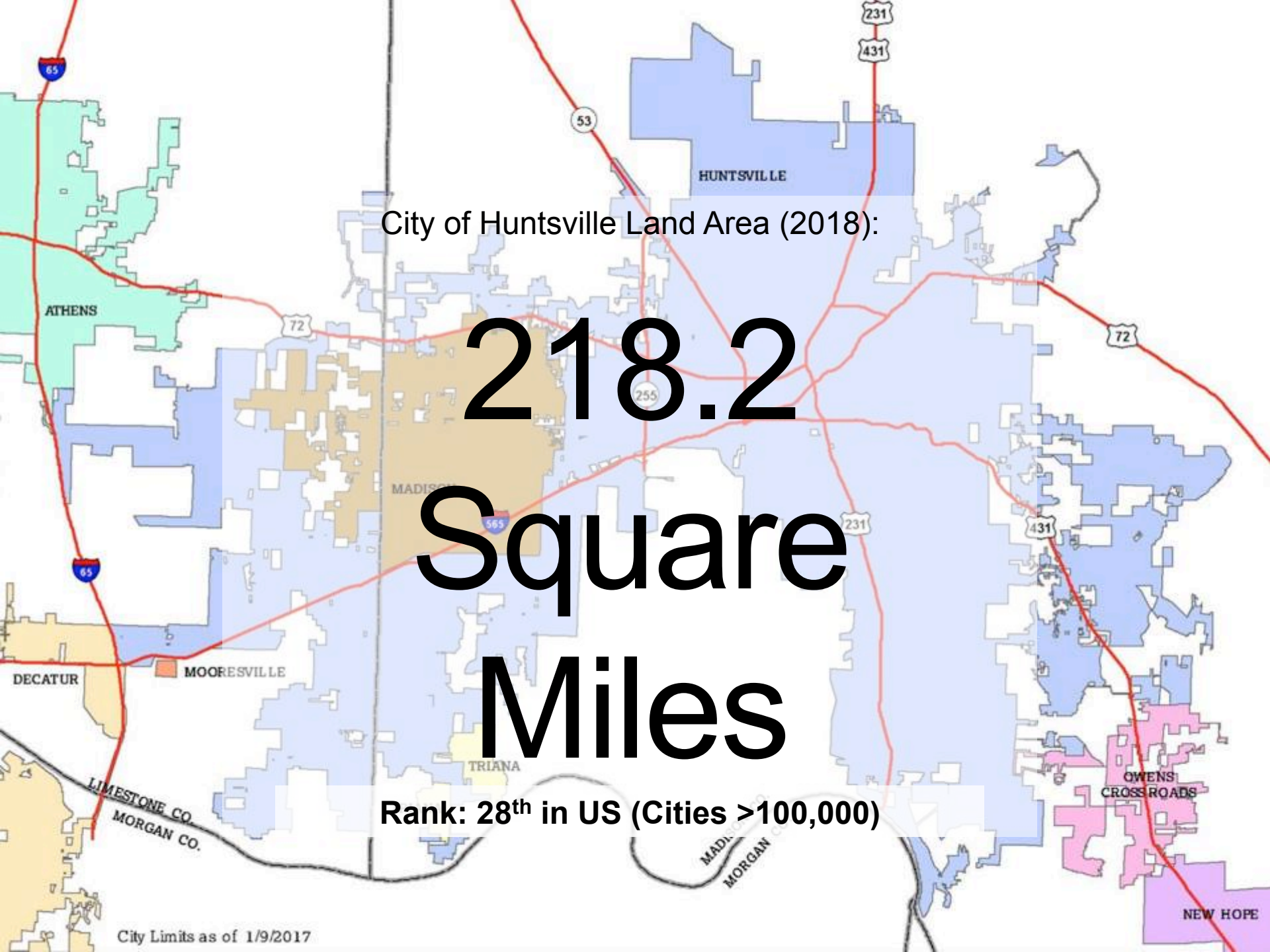


Population: 158,635

2010



Population: 180,105



City of Huntsville Land Area (2018):

218.2
Square
Miles

Rank: 28th in US (Cities >100,000)

Atlanta
133.5 Square Miles



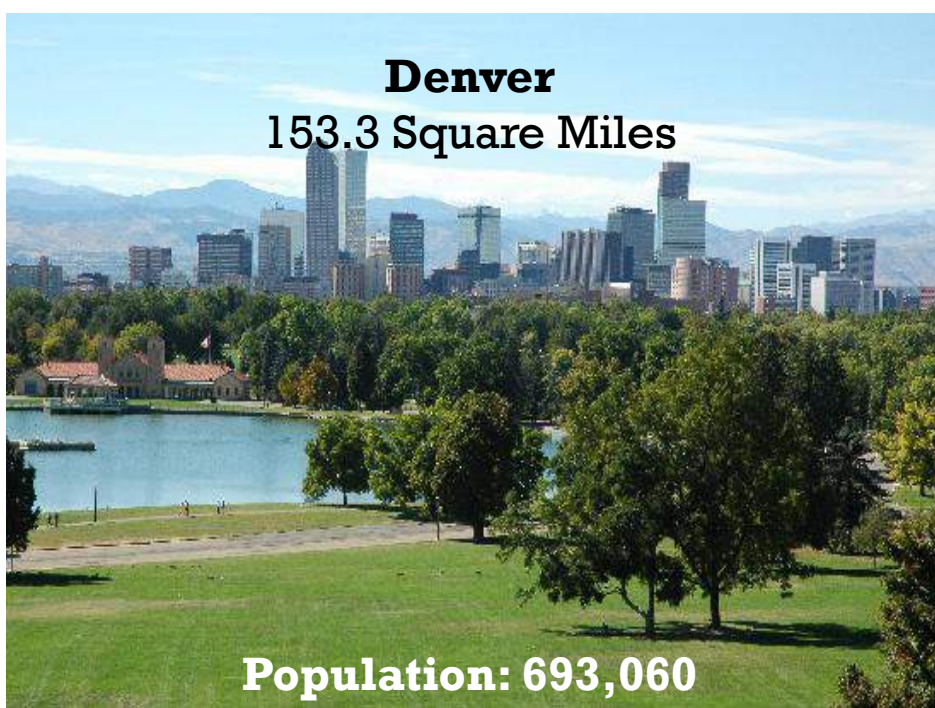
Population: 472,522

Las Vegas
134.4 Square Miles



Population: 632,912

Denver
153.3 Square Miles

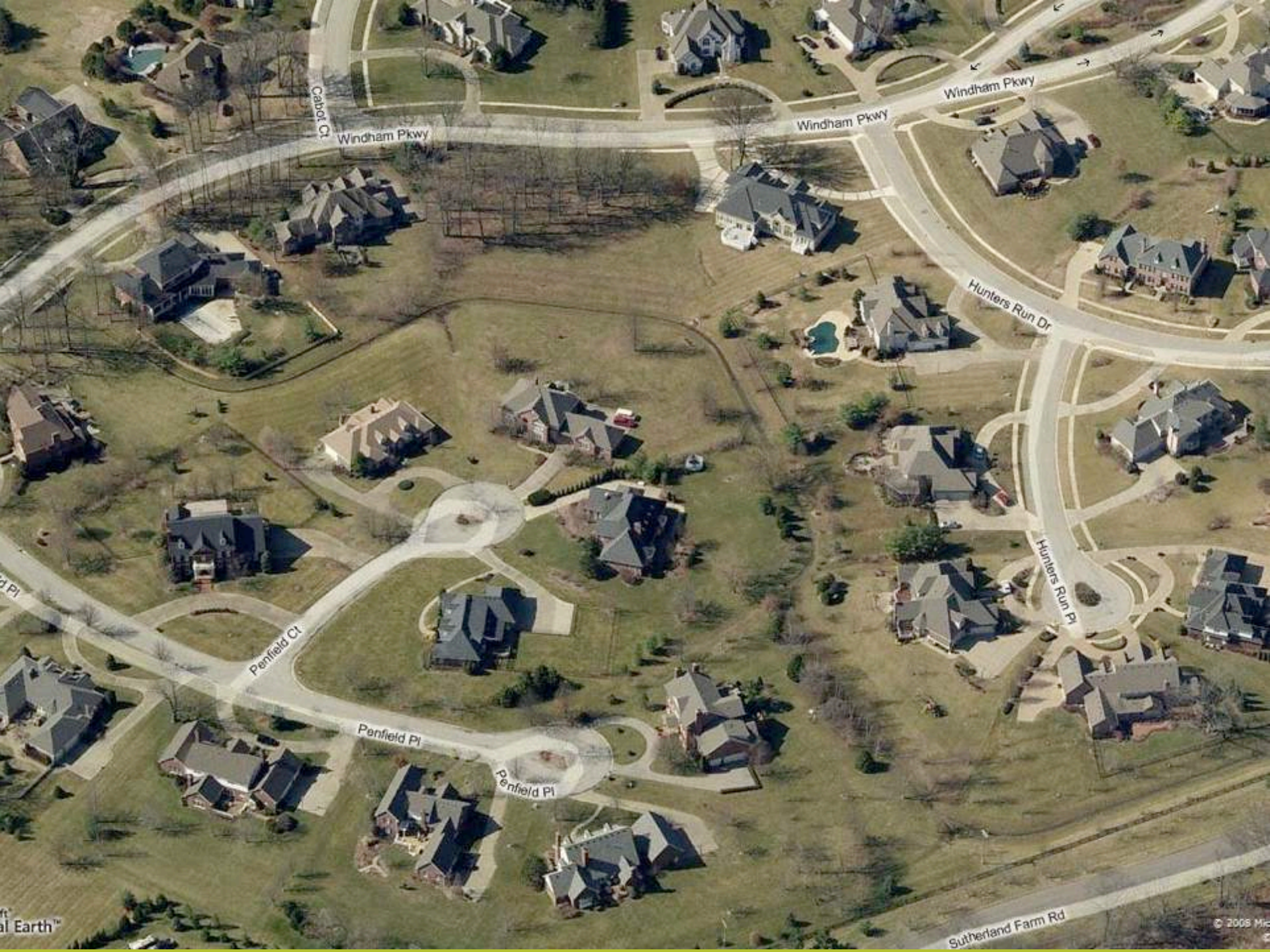


Population: 693,060

Philadelphia
134.2 Square Miles



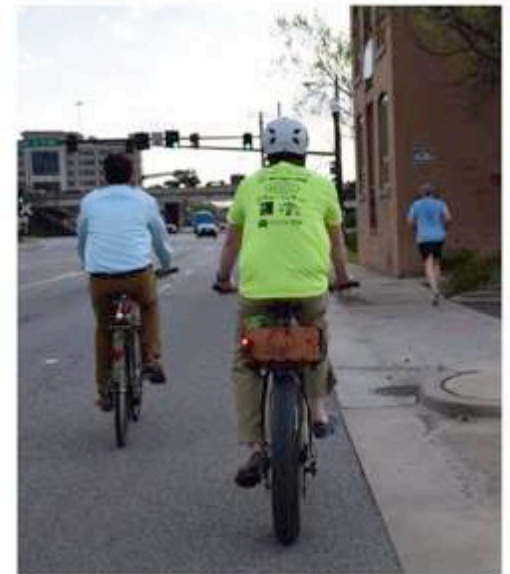
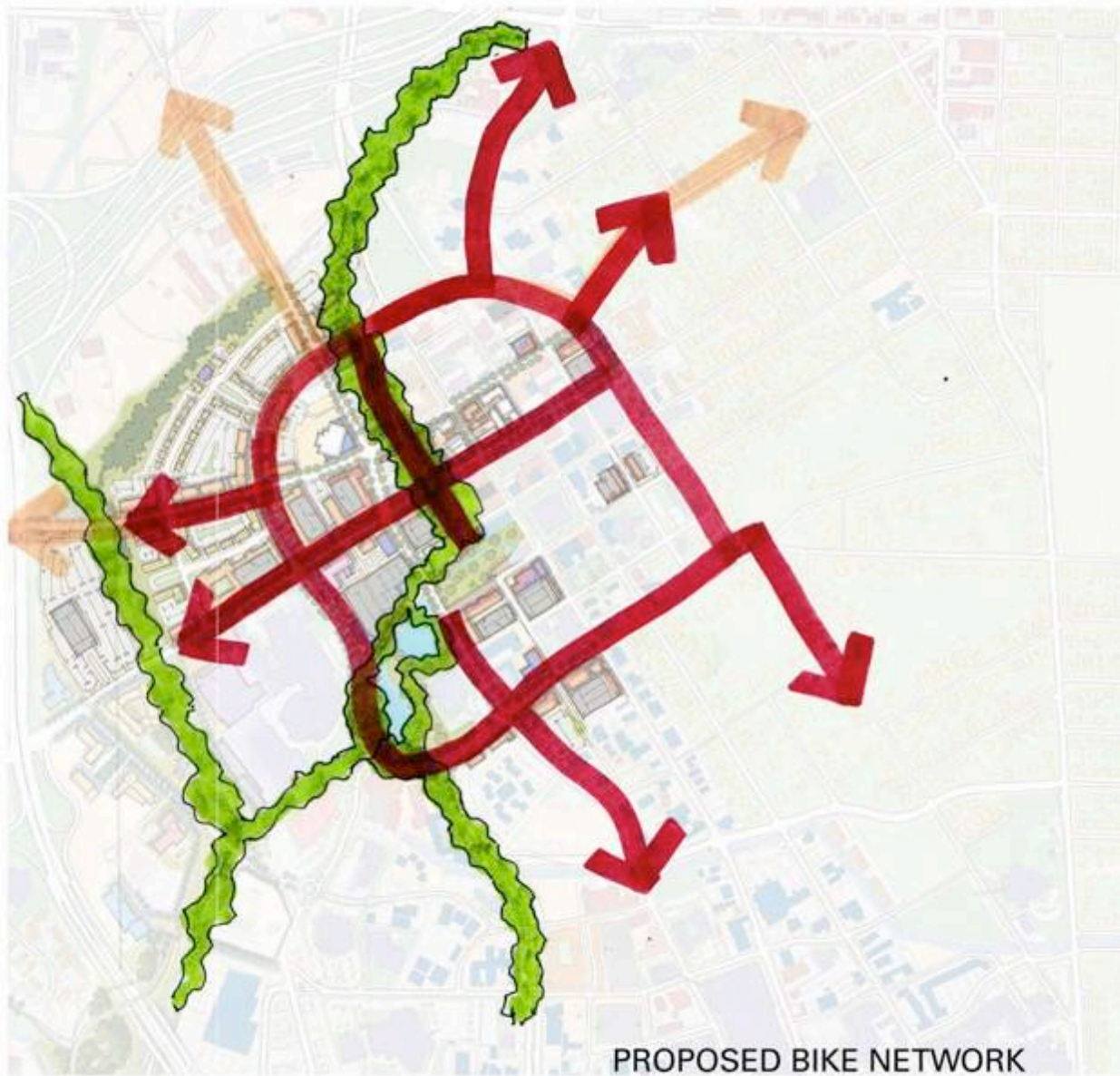
Population: 1,567,872





Downtown Huntsville Master Plan





Enhance Mobility - The 'Bikeable' City Center

Enter Safe Streets, Smart Cities

We take Complete Streets out of downtown



HsvMayorsOffice
@HsvMayorsOffice



Jones Farm Park to Aldridge Creek Greenway

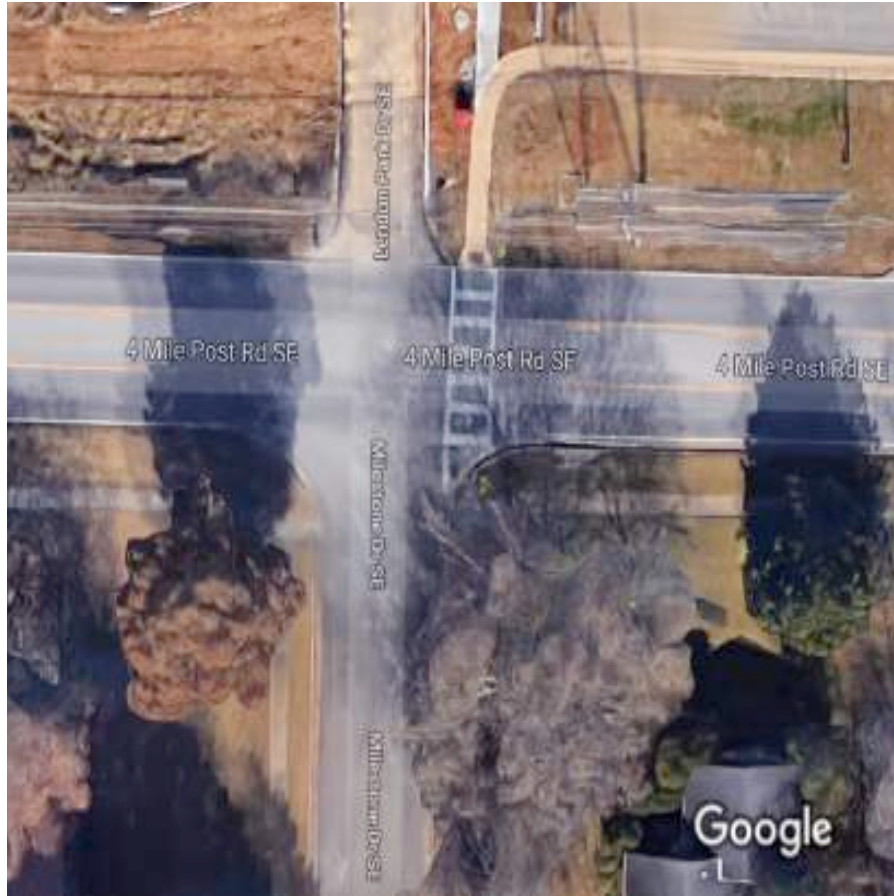
- Creating safe bicycle and pedestrian connection between two recreational resources.



The Park and the Greenway



Four Mile Post: Before and After



Four Mile Post: Before and After



Four Mile Post: Before and After



Four Mile Post: Before and After



Thank You!

Paige Colburn

paige.colburn@huntsvilleal.gov

Clint Johns

Clint.Johns@huntsvilleal.gov



Pittsburgh, PA demonstration project

Lincoln and Frankstown Avenues

A hand-drawn sketch map of a neighborhood. The map shows several streets: Lowell St. running vertically on the left, Enterprise St. running vertically on the bottom left, Lincoln Ave. running diagonally from the top right towards the center, and Frankstown Ave. running diagonally from the center towards the bottom right. There are various buildings, trees, and a large open area in the center. The title 'Lincoln and Frankstown' is overlaid in the center.

Lincoln and Frankstown

Safe Streets, Smart Cities Academy



United Way
of Southwestern Pennsylvania

PortAuthority

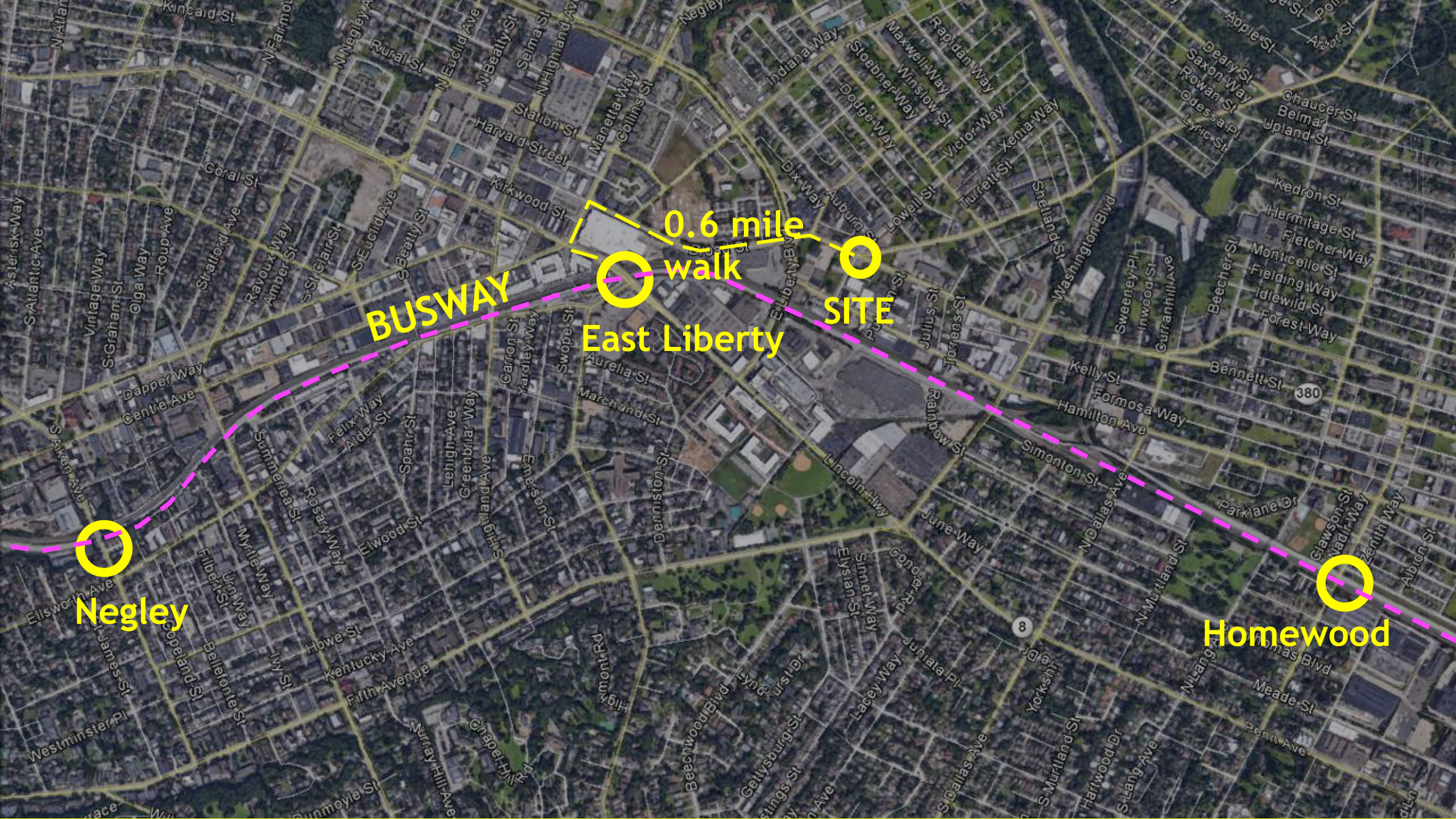


Pittsburgh
Public Schools

Healthy
eBike Ride

Intersection Selection

- High crash corridor / intersection
- Few 311 requests
- City-owned
- High potential for intervention
- In need of investment



BUSWAY

**0.6 mile
walk**

SITE

East Liberty

Negley

Homewood



**STAGNO'S
BAKERY**

**CHURCH
OF GOD**

**LINCOLN
ELEMENTARY**

SUNOCO

**GARDEN
RESOURCE
CENTER**

Lincoln Ave and Frankstown Ave

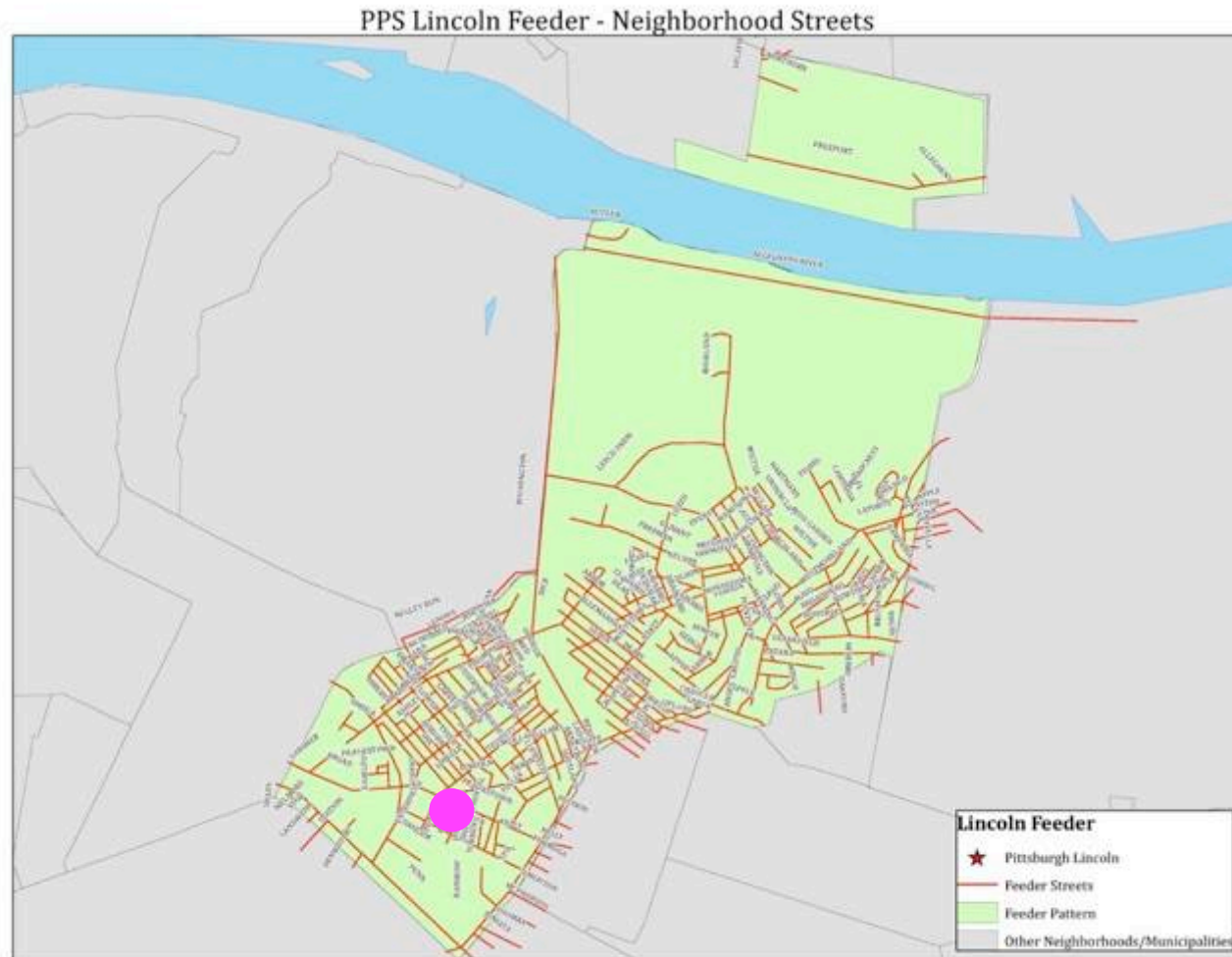


Lincoln Ave and Frankstown Ave

Looking north



Lincoln K-5 feeder pattern



Student Transportation:

106 bus riders

81 walkers (43%)

Surveys and School Outreach

▶ Seat Belt Safety

How should we buckle up?

Are you in the right seat?

▶ Safe Walking

Safety rules of walking

▶ School bus safety

The danger zones of a school bus

The “school bus seat belt”

▶ Bikes

What do you need to ride?

Protecting your head

Road Rules

**Traffic Safety Education
For Elementary Students**

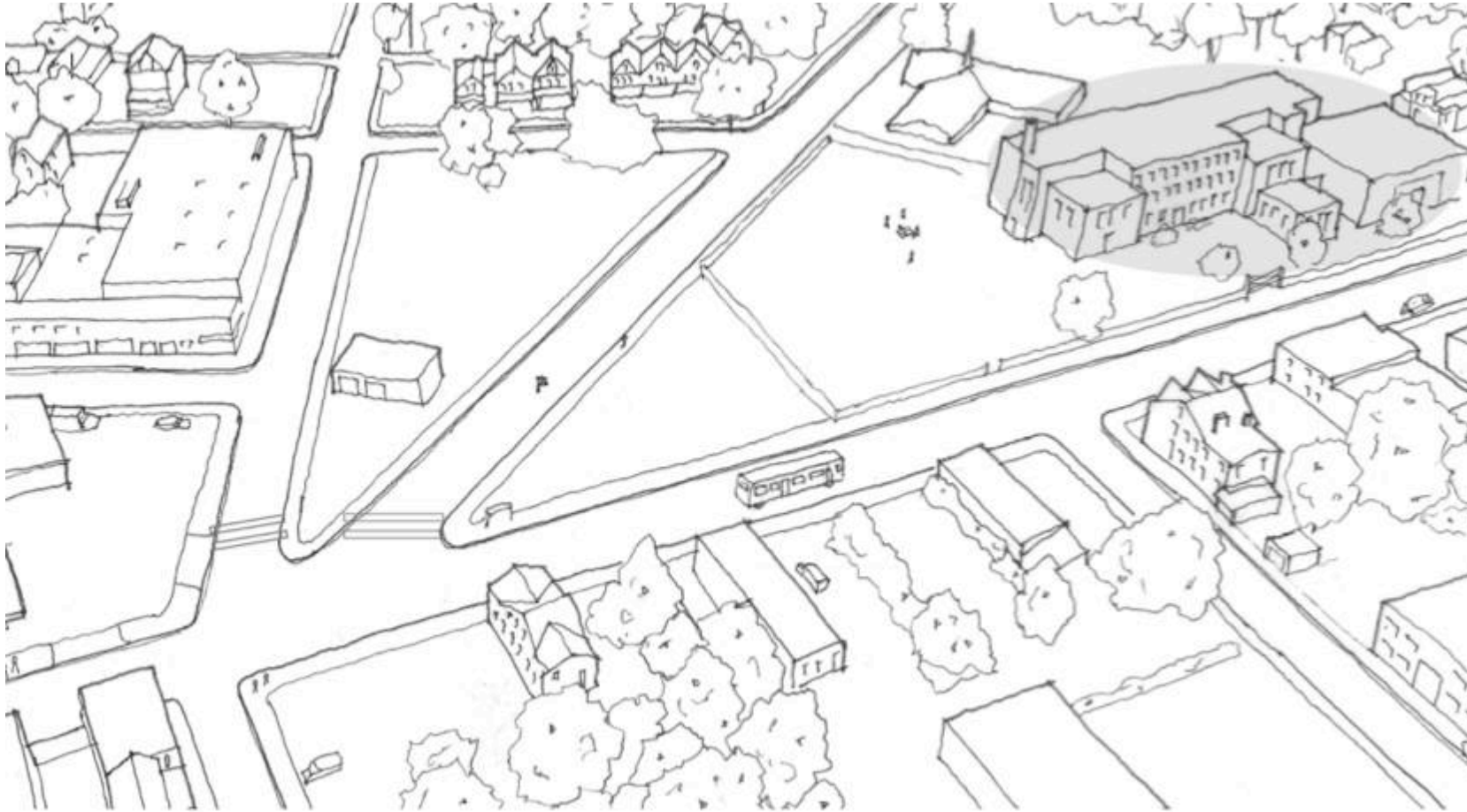


Surveys and School Outreach



14 presentations
250 students

Surveys and School Outreach



Where you cross the street



Where you want a new cross walk



Where you want to see artwork

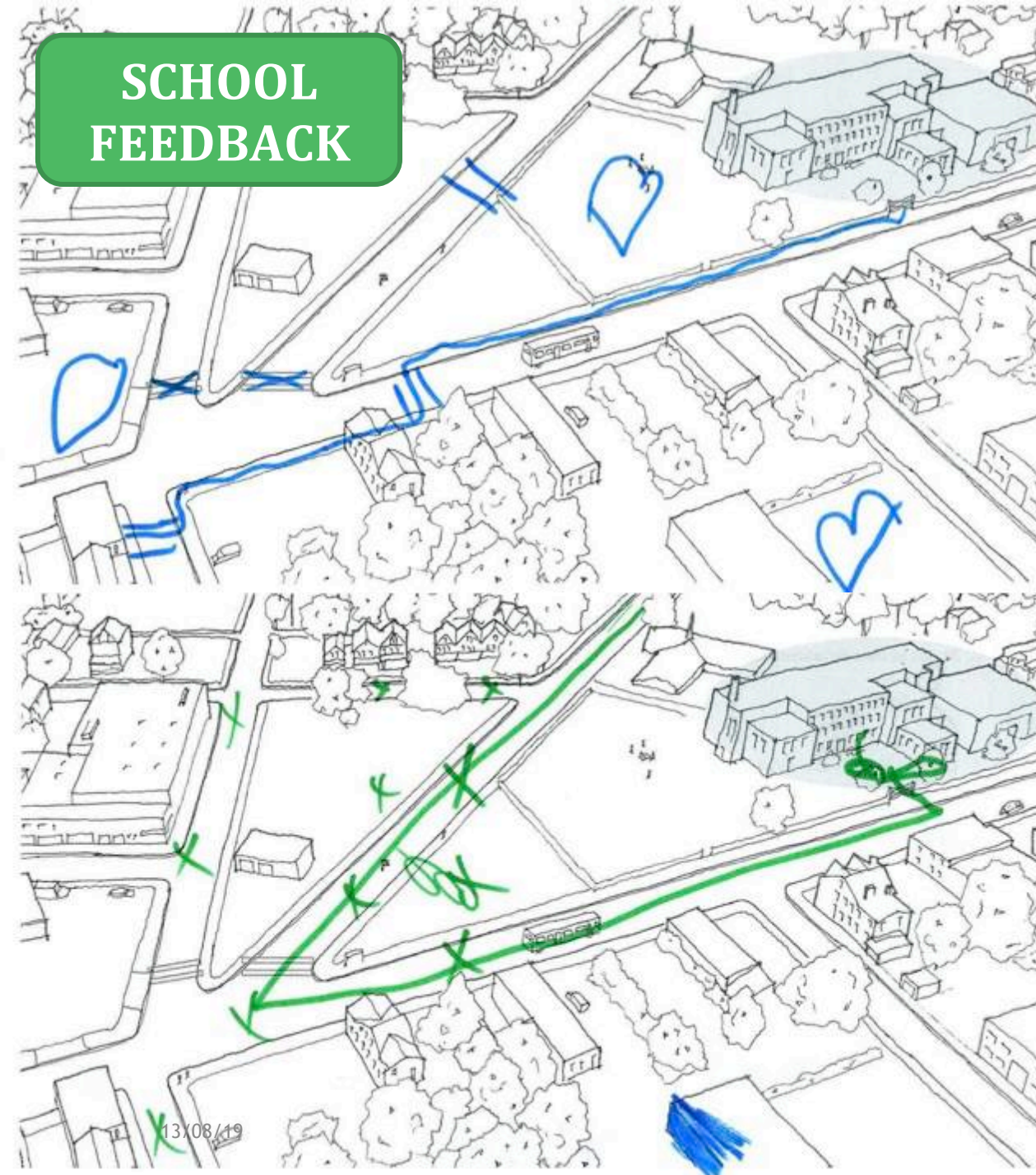


Where you want to see plants



Your path to school

SCHOOL FEEDBACK



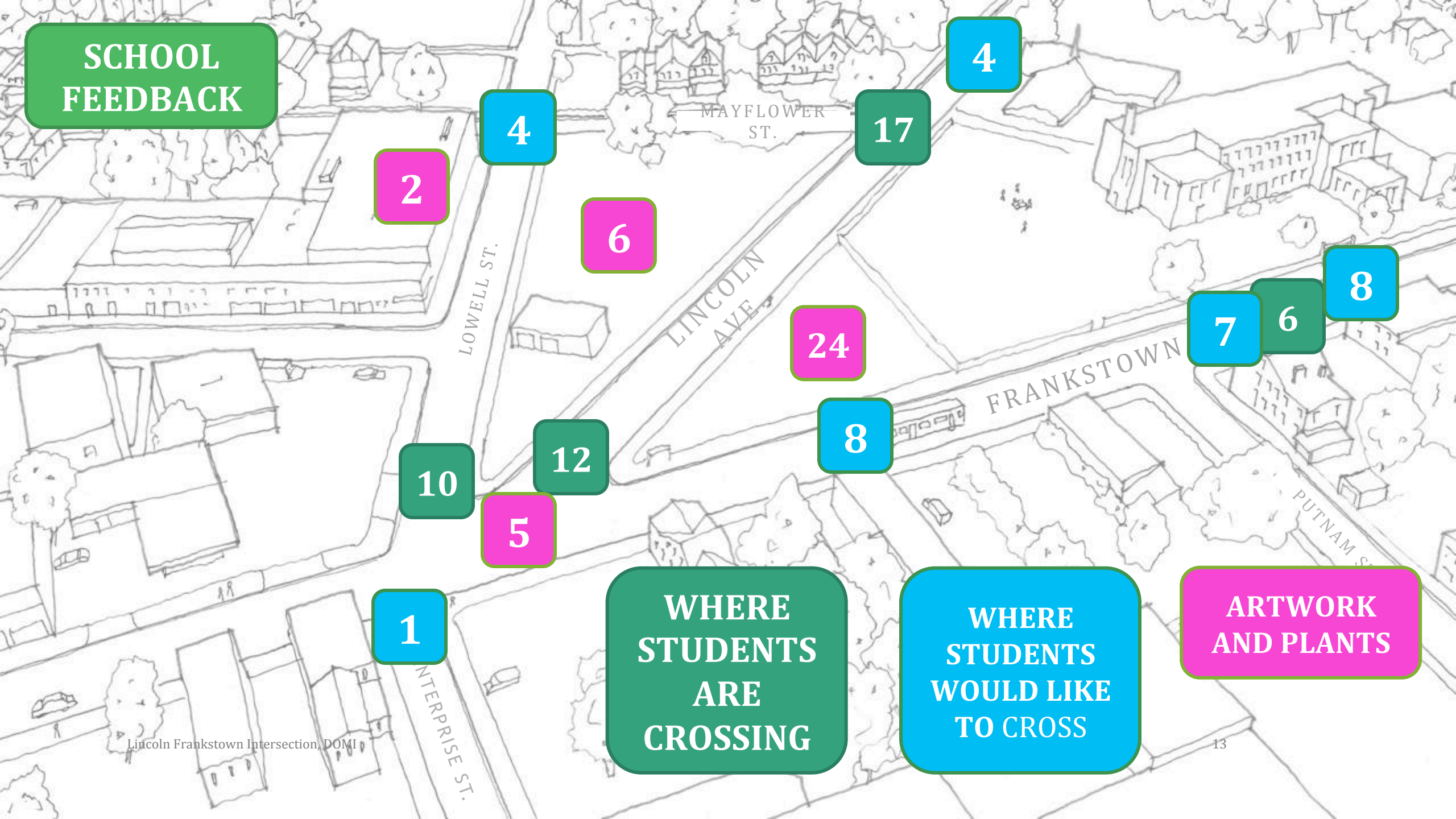
13/08/19



Lincoln Franksdown Intersection, DOW

12

**SCHOOL
FEEDBACK**



**WHERE
STUDENTS
ARE
CROSSING**

**WHERE
STUDENTS
WOULD LIKE
TO CROSS**

**ARTWORK
AND PLANTS**

Surveys and School Outreach

How do you feel when you cross the intersection?

“I feel a little bit scared because the cars go too fast
but I feel dangerous “

“I feel safe when I cross the street “

“I feel brave “

“Nervous”

Surveys and School Outreach

Would you like to add anything the open space in the intersection to make it feel more fun? If so, what?

“A light to tell cars ‘here comes the kids’”

“Sidewalks and more crossing guards “

“Trees and flowers”

Neighborhood Outreach – Deliberative Democracy



Pittsburgh Mobility & Infrastructure
@PghDOMI

Follow

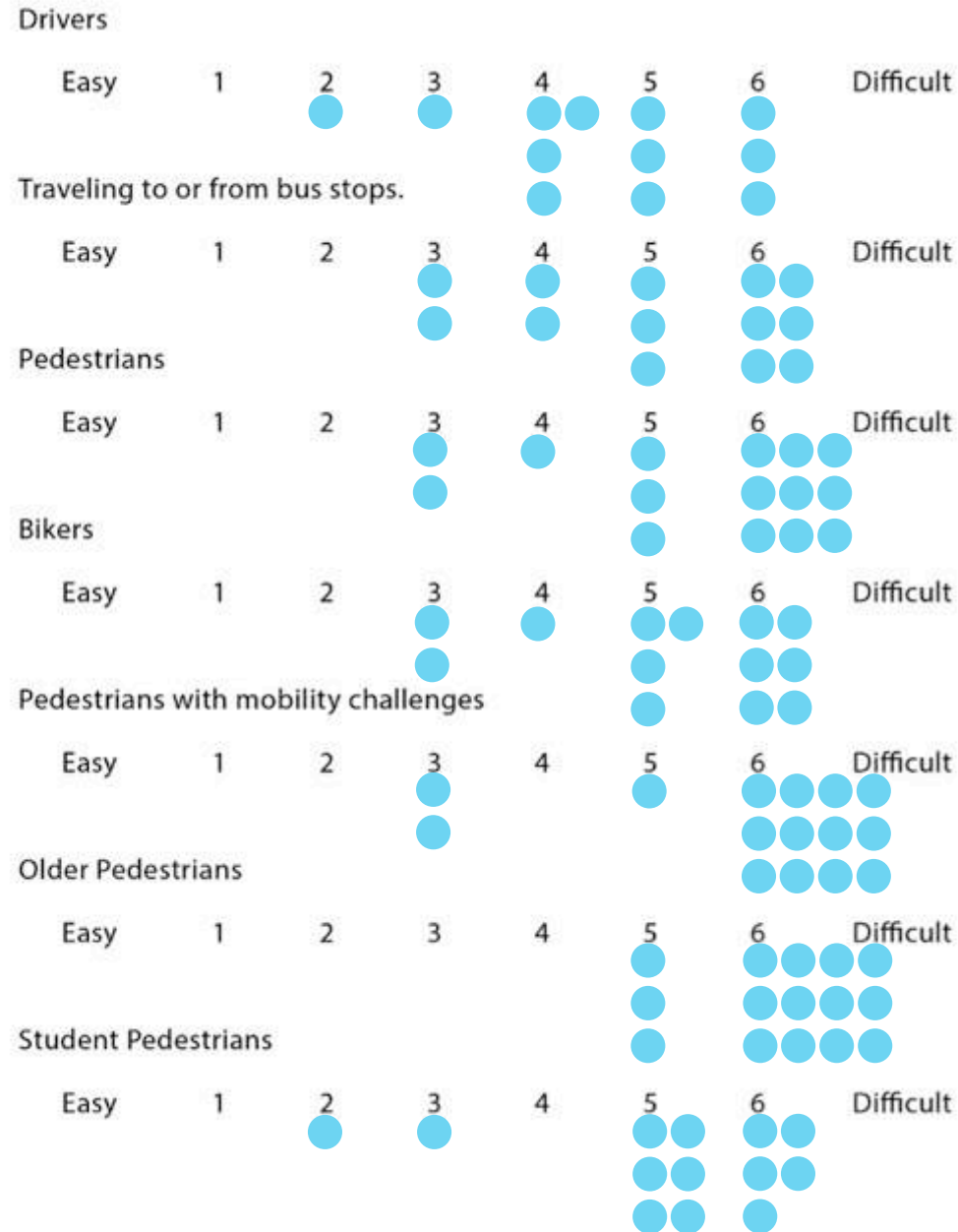
Great community input and ideas about how to improve the Lincoln Frankstown intersection at our community forum last night. Check back here for more information about our next event and changes to the intersection coming soon.



1:07 PM - 3 Apr 2019

Neighborhood Outreach – Deliberative Democracy

How easy is it
for the
following
groups to use
this
intersection?



Neighborhood Outreach – Deliberative Democracy

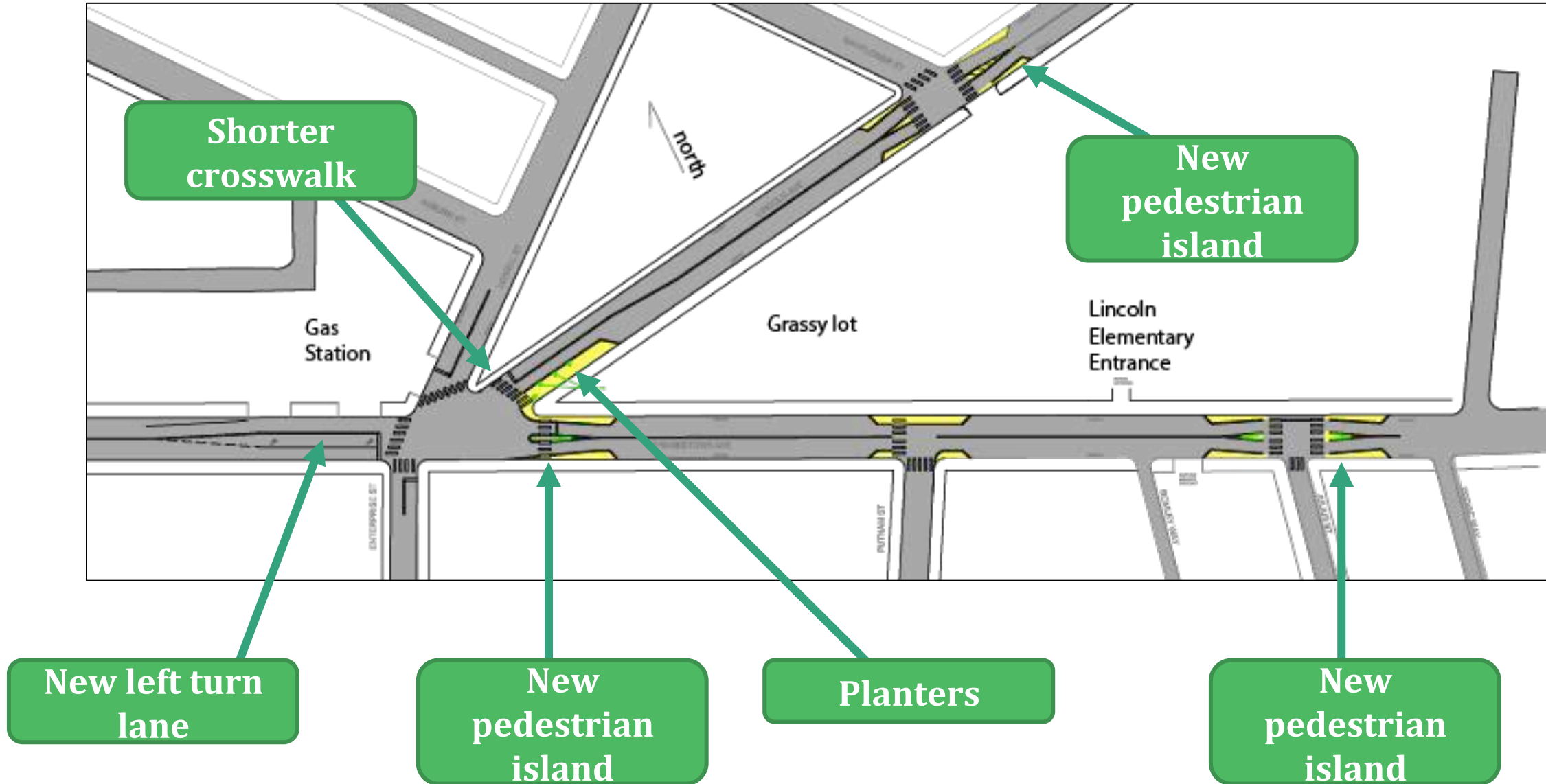
When crossing this intersection, is it easy, do you feel safe, is it pleasant?

“scary at night”

“barren and exposed to sun and cold”

“depressing”

Project Implementation & Celebration



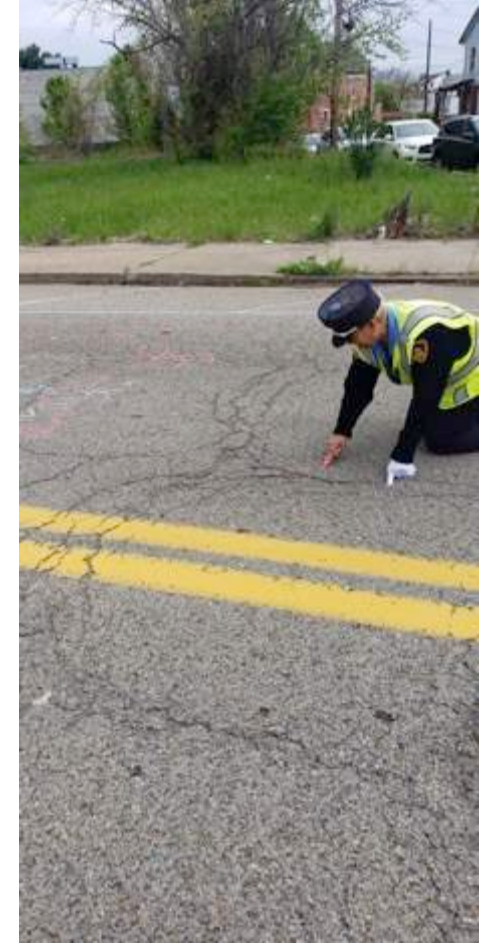
Project Implementation



Opening Party



Opening Party



Opening Party



Thanks for listening and thanks to our project team!

Oliver Beasley, Policy Analyst, Office of the Mayor

Sergey Brodskiy, Staff Engineer, City of Pittsburgh

Leann Chaney, Transportation Planner, Southwestern Pennsylvania Commission

Sarah Khalil, Service Leader, Pittsburgh Bike Share

Anna Kudrav, Assistant Chief, Pittsburgh Bureau of Police

Breen Masciotra, TOD Project Manager, Port Authority of Allegheny County

Bryanna McDaniel, Public Health Educator, Allegheny County Health Department

Shauna McMillan, Director of School Initiatives, United Way

Megan Patton, Transportation Project Manager, Pittsburgh Public Schools

Lindsay Powell, Assistant Chief of Staff, Office of the Mayor

Kristin Saunders, Principal Transportation Planner, City of Pittsburgh

Katy Sawyer, Traffic Project Manager, City of Pittsburgh

Craig Toocheck, Staff Engineer, City of Pittsburgh



Smart Growth America
Improving lives by improving communities



National Complete Streets Coalition



Type your questions for our presenters in the chat box

Questions?